

Electromagnetic Flow Meter

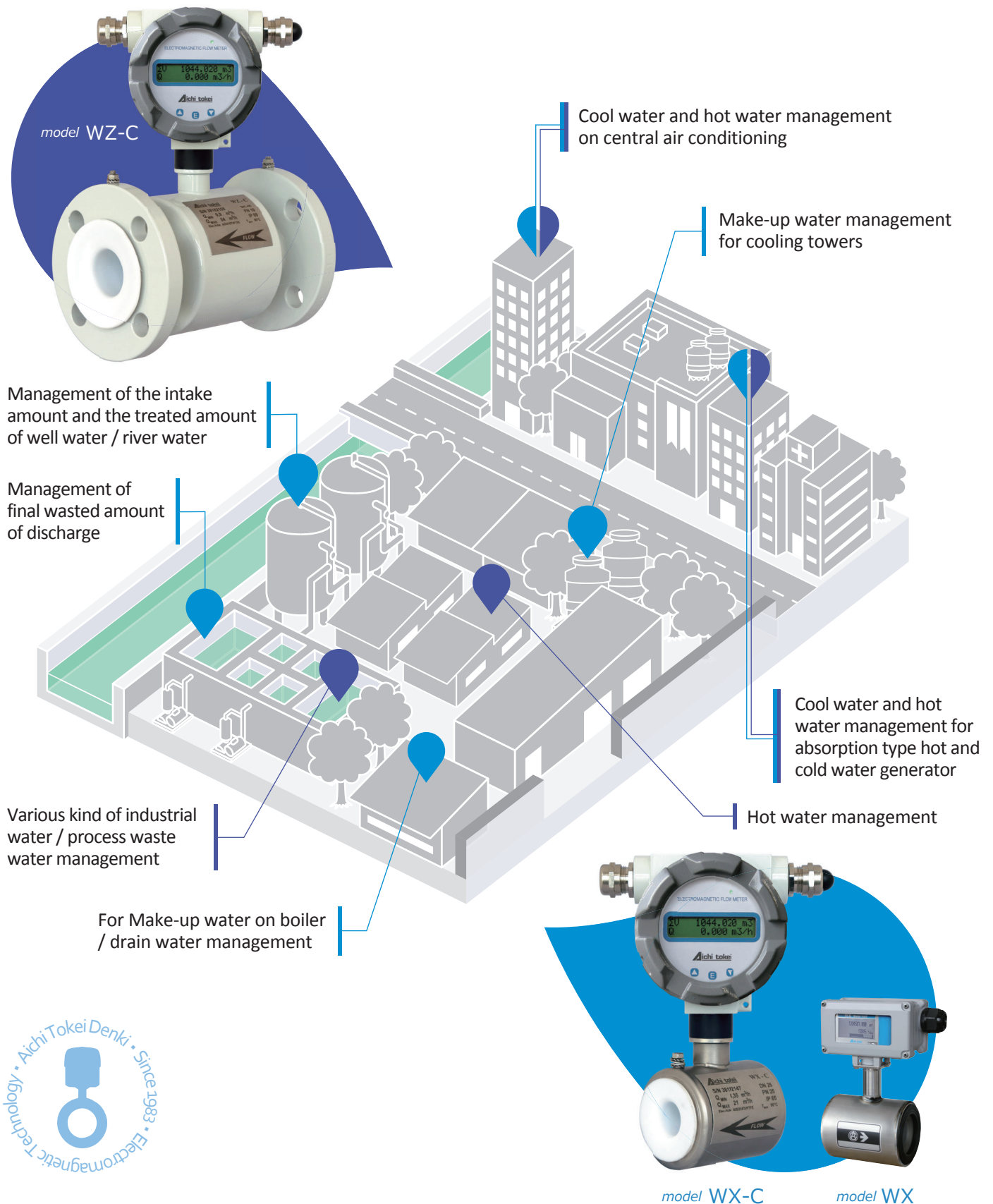
Water maX series **WX-C/WZ-C**

For various types of fluid management
such as cooling water, warm water,
treated water, process waste water, etc.



Aichi tokei

Management of various types of liquid in a factory or air conditioning is available.

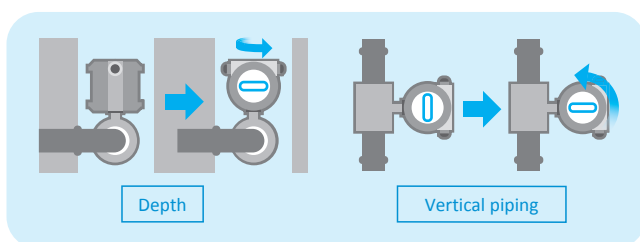
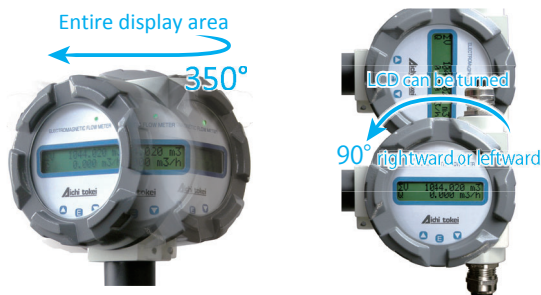


Display area that is easy to see

Point.1

Easy to change the direction of display according to the environment of installation

Even in vertical piping or in a narrow and recessed place, the display can easily be checked.



Point.2

Backlight LCD

The letters can be seen clearly and the settings can be changed even in a dark place.



Point.3

Variations on display indication

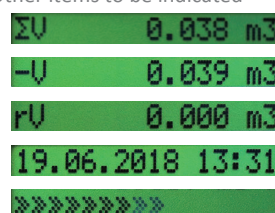
2 items can be selected from among the following 7 items, and can be indicated in two rows: top and bottom.

Example of item selection



- Forward flow integrated value
- Instantaneous flow rate

Other items to be indicated

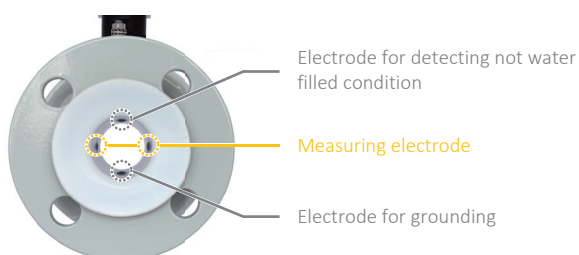


- Total integrated value
- Reverse flow integrated value
- Integrated trip value
- Date (Day, Month, Year)/Time
- Bar graph

Effective for treated water and process waste water measuring/* /

Adopting fluorocarbon resin lining, selection of the electrode material is enabled.

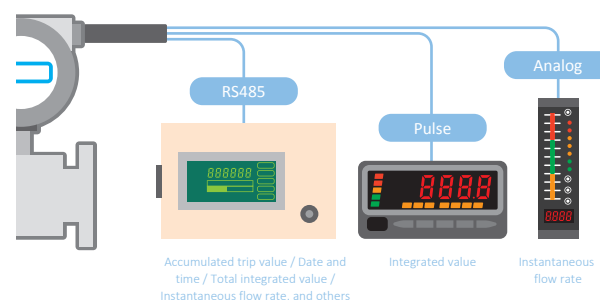
The electrode material can be selected from among SUS316 stainless steel (standard), titanium, Hastelloy C, and tantalum. / *notice : WZ-C only



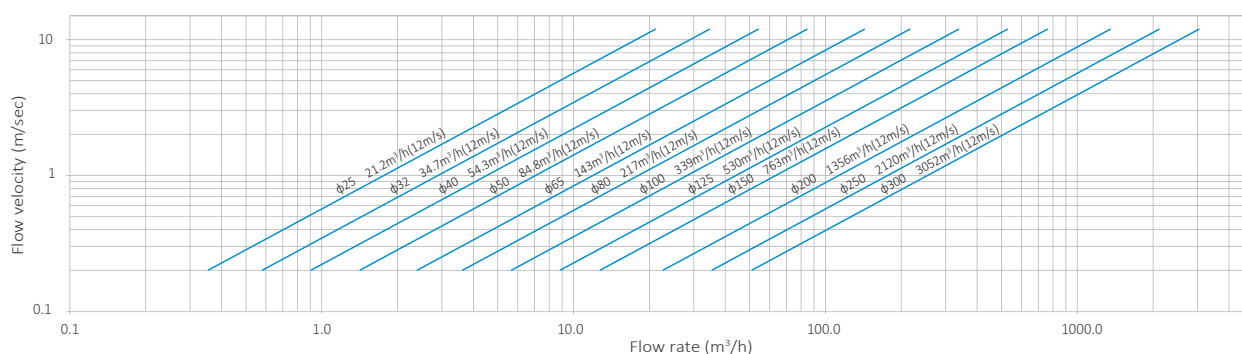
Various outputs signal can be selected according to use

Supported with pulse/analog outputs as standard specifications

As an option*, RS485 output can also be selected. *WZ-C



► Flow velocity/Flow rate conversion table



Specifications of the electromagnetic flow meters WX-C / WZ-C

Type	WX025C	WX040C	WZ025C	WZ032C	WZ040C	WZ050C	WZ065C	WZ080C	WZ100C	WZ125C	WZ150C	WZ200C	WZ250C	WZ300C
Nominal Diameter	25mm	40mm	25mm	32mm	40mm	50mm	65mm	80mm	100mm	125mm	150mm	200mm	250mm	300mm
Maximum flow rate (m³/h)	21	54	21	34	54	84	144	220	340	534	760	1350	2115	3050
Minimum flow rate (m³/h)	0.35	0.9	0.35	0.6	0.9	1.4	2.4	3.6	5.6	8.9	13	23	35	51
Analog FS value (m³/h) *1	5	13	5	8	13	20	35	50	85	130	190	340	530	760
Zero cut flow rate (m³/h)	0.26	0.68	0.26	0.45	0.68	1.2	1.8	2.7	4.2	4.5	9.6	18	26.4	38
Accuracy	±1.0%RD													
Temperature of the measured fluid	Rilsan Lining: Not Over from 0 to +70°C PTFE/PFA Lining: Not Over from 0 to +90°C (no freezing permissible)													
Temperature and humidity of the environment of use	Between -10 and +55°C 90%RH or below (no freezing or condensation)													
Conductivity	20µS/cm or more													
Output	Analog	1 point 4-20mA max. load: 400Ω or less												
	Pulse *2	2 points Open collector 48VDC/25mA ON width: 4.3ms (can be set at 1-424ms) Output 1: Integrated pulse (factory default settings 25-80mm: 100L/P, 100-300mm: 1000L/P), Output 2: alarm												
	Communication		(Option) 1 point RS485 Modbus/RTU *3 Communication speed: 9600bps (selectable from 1200,2400,4800,9600bps)											
Indication	Display screen	16 letters × 2 rows (1 letter Dot matrix having 7 columns ×5 rows) Green backlight												
	Contents of indication	(Standard indication) 1st row: Forward flow Integrated value, 2nd row: Instantaneous flow rate / Date and time / Total Integrated value / Forward flow Integrated value / Reverse flow Integrated value / Integrated trip value / Instantaneous flow rate / Bar graph												
Power supply *4	24VDC±10% (power supply current: 350mA or more)													
Power consumption	8.4W													
Connecting method	Wafer *5		Flange JIS 10K											
Operating pressure	1.0MPa													
Protection *6	IP65													
Materials	Display part: aluminum, glass Measuring tube: stainless steel Lining: PTFE, Rilsan Electrode: SUS316Ti stainless steel		Display part : aluminum, glass Measuring tube: flange, stainless steel Lining : PTFE, PFA, Rilsan Electrode : (Standard) SUS316Ti stainless steel, (Option) titanium, Hastelloy C, and tantalum											
Mass Weight	About 4kg	About 5kg	About 6kg	About 7kg	About 8kg	About 10kg	About 12kg	About 13kg	About 20kg	About 27kg	About 38kg	About 45kg	About 66kg	About 79kg

*1 Set value when the analog output is 20mA at the time of delivery. The setting can be changed to an arbitrary flow rate.
*2 Selection can be made from among Integrated pulse, flow switch, and alarm (output 2 only). The setting of the Integrated pulse unit can be changed.
*3 The communication specifications can be downloaded from our product website.
*4 Power should be supplied from isolated power supply with overcurrent protection. In addition, 1 power supply unit should be connected to each flow meter.
*5 Wafer = (Sandwich) by using JIS 10K flanges
*6 In case installed outdoors, a lightning arrester should be installed, and direct sunlight should be avoided. Failure to observe this precaution may lead to failure of the equipment, malfunction/defective operation of the switch.

Outer dimensions

